

# the seasiders



**BLACKPOOL**

versus

**SWINDON TOWN**

SATURDAY, 27th Jan., 1973

KICK-OFF 3.00 p.m.

FOOTBALL LEAGUE  
DIVISION TWO

Official Programme 7p  
75th ANNIVERSARY



## BLACKPOOL FOOTBALL CLUB

*Registered Office*  
Bloomfield Road  
Blackpool  
Blackpool 46118

Hon. President:  
A. E. Parkinson

Directors:

Chairman:  
F. M. Dickinson  
Vice-Chairman:  
C. A. Sagar, B.E.M.  
R. Seed  
G. S. Parr  
T. H. Lane  
W. S. Lines  
Ald. A. E. Stuart, J.P.  
D. J. Lewin  
I. Gibrail

Hon. Medical  
Officers:  
Dr. J. Sime and  
Dr. D. Crookenden

Secretary:  
D. McBain

Manager:  
H. Potts

Promotions  
Manager:  
W. Townsend

# visitors

## SWINDON SLIP AFTER GOOD RUN by TONY PULLEIN

A run of six games without a win has halted Swindon's rapid rise up the table which had been inspired by new manager Les Allen, who took over when Dave Mackay left.

It is possible, of course, that Swindon are now beginning to feel the loss of England under-23 winger Don Rogers who, after playing his 400th League game for the club, was transferred to Crystal Palace for £140,000 a few weeks ago. £50,000 of the Rogers fee was quickly re-invested in Southampton's unsettled left-winger Tom Jenkins, a player once discarded by West Ham and Orient, but Jenkins has suffered a series of injuries since his transfer and his full effect has not yet been felt.

Swindon have not traditionally been great operators in the transfer market yet they have twice broken their club record fee in the past few months. A new high record was set when they paid Charlton £35,000 for Republic of Ireland international Ray Treacy in the summer — Treacy is now top scorer with 9 goals — and this in turn was beaten by the Jenkins transfer. Swindon have won only two away games so far — at Luton (1-0) and Middlesbrough (2-0). Four away games have been drawn: Huddersfield (1-1), Nottingham Forest (2-2), Millwall (1-1) and Portsmouth (1-1). The remainder have been lost: Sheffield Wednesday (1-2), Carlisle (0-3), Sunderland (2-3), Aston Villa (1-2), Hull (2-3), Burnley (1-2), Oxford (0-1), and Bristol City (0-3).

Our game at the County ground in September ended in a goal-less draw. We maintained our 100 per cent. record against the Wiltshire club when we beat them 4-1 at Bloomfield Road on the opening day of last season.

Swindon Town are one of the modern breed of ambitious clubs trying desperately to break away from their old image. For years they were no more than an ordinary Third Division club, quite content to drift on aimlessly from year to year. Today Swindon want it known that their declared intention is a place in the First Division.

The real turning point for Swindon came one March day in 1969 when they outplayed Arsenal at Wembley to win the League Cup.

At the end of that season, Swindon were promoted to Division Two. And, with those Wembley memories burning bright, the directors planned ground improvements in preparation for the day when First Division status is achieved. Part of these plans reached maturity last season with the completion of a new grandstand.

Founded in 1881, Swindon became members of the Third Division (South), along with all the other Southern League first division sides, in 1920.

It was in 1963 that Swindon first broke out of the Third Division, with a star-studded young team assembled by manager Bert Head. They made a brilliant start to their Second Division career, heading the table for several weeks. Alas, they could not maintain the pace and, within two years, they were back in Division Three.

Danny Williams, who was responsible for the Wembley side, Fred Ford and Dave Mackay have since followed as Swindon managers and now Les Allen is in charge.

A former Chelsea and Spurs player — he was an ever-present member of the 1961 Double team — Mr. Allen finished his playing days with Queen's Park Rangers, playing in the 1967 League Cup winning team. He later became manager but left after two years.

# pen pictures

**PETER DOWNSBOROUGH** (Goalkeeper). Born Halifax. Signed in August 1965 from Halifax Town where he was a product of local football. A fearless agile player who has done much to strengthen the Town's defence. Regular member of promotion winning side of Season 1968/69. Height 5' 10½". Weight 13st. 7lbs.

**JOHN TROLLOPE** (Full-back). Born Swindon. A local player who joined the Swindon ground staff from school. He was selected for the first team at the beginning of the 1960-61 season when he was just 16 years old, and was ever-present during that season. Together with his partner that year, who was also 16, they were the youngest full-backs ever to appear as a pair in League Football. Regular member of promotion winning side of season 1968/69.

**ROD THOMAS** (Full-back). Born Glyncoirwg. A former youth player with the Club. He was signed from Gloucester City in July 1964. Has gained Welsh Under-23 Caps and Full Welsh Caps. Regular member of promotion winning side of season 1968/69. Height 6' 1½". Weight 12st. 10lbs.

**JOE BUTLER** (Full-back). Born Newcastle. Joined Swindon from Newcastle United in August 1965, where he graduated to the senior ranks through the Club's Junior Team. A tenacious player whose speed and ability amply make up for his lack of inches. Regular member of promotion winning side of season 1968/69. Height 5' 7½". Weight 10st. 10lbs.

**ROGER SMART** (Right Half or Inside Forward). Born Swindon. Another local player who joined the Club direct from Swindon Schoolboys Team. At 17 he was appearing regularly at centre-forward in the Reserve Team, but he excels as a deep lying inside-forward. A versatile player who is able to play at wing-half. Regular member of promotion winning side of season 1968/69. Height 6'. Weight 11st. 10lbs.

**FRANK BURROWS** (Centre-half). Born Larkhall, Scotland. Joined the Club from Scunthorpe United for whom he played three seasons. Formerly with Raith Rovers. A strong defender who has made his mark in the first team. Regular member of promotion winning side of season 1968/69. Height 6' 1". Weight 12st. 8lbs.

**PETER NOBLE** (Inside-forward). Born Sunderland. Joined the Club from Newcastle United in January 1968 for whom he played for four years. Prefers to play an attacking role. Regular member of promotion winning side of season 1968/69. Height 5' 8". Weight 10st. 10lbs.

**STEPHEN PELOW** (Outside-right). Born Liverpool. Played for Liverpool Schoolboys, and joined Liverpool from school. Made three First Team appearances 1969/70 for Liverpool and was a regular member of the team which won the Central League for two consecutive years. Height 5' 9". Weight 11st. 2lbs.

**RAY TREACY** (Centre-forward). Born Dublin. Joined Swindon from Charlton Athletic. Prior to this he was a member of the West Bromwich squad. Ray has been a representative of Eire at schoolboy, youth, Under-23 and Full International level. Excellent header of a ball and has been a regular marksman with his previous clubs. Height 5' 9". Weight 11st. 4lbs.

**RONALD HOWELL** (Midfield player). Born Tottenham. Joined Swindon from Kettering, his previous Clubs being Tottenham, Millwall and Cambridge United, and was a member of the London Boys Team. Ron is a forceful attacking midfield player who has made his presence felt since joining the Club this season. Height 5' 8". Weight 11st.

**RAY BUNKELL** (Wing-half). Born Tottenham. Joined the Club June 1971 from Tottenham where he was a regular Football Combination player. He also played for the England Youth Team. Height 5' 9". Weight 11st. 3lbs.

**PAUL PETERSON** (Full-back). Born Luton. Signed during the close season from Leeds whom he joined from school. Played three games for the First Team and regularly for the Central League side. Originally played at outside-left. Height 5' 7". Weight 11st.

**DAVID DANGERFIELD** (Inside-forward). Born Nailsworth. English Schoolboy International. Signed as a Professional 1969. Height 5' 8". Weight 11st 3lbs.

**TERRY HUBBARD** (Inside-forward). Born Newport. Apprentice Professional. Signed Professional 1969. Has now established himself as a regular First Team player. Height 5' 7½". Weight 10st. 2lbs.

**CHRIS PORTER** (Outside-left). Born Bridgewater. Signed from Bridgewater 1969. Height 5' 10". Weight 11st. 7lbs.

For the ultimate in luxury and comfort  
you must travel . . .

## **ATALANTA**

**Agents for all leading tour  
operators**

**12 to 53 seater coaches for  
hire at competitive prices**

Head Office :  
448 Talbot Road, Layton,  
Blackpool. Telephone 33255/6

Coach Office :  
30 Palatine Road,  
Blackpool. Tel 23991/26608

FOR YOUR NEXT PRINTING ORDER

try the

## **BLACKPOOL UNION PRINTERS LTD.**

Office and Works :

**Charnley Road, Blackpool**

Telephone 20943

Established 1869

For all your INTERIOR and  
EXTERIOR DECORATING

## **STANLEY PARR**

**(Painting Contractors) LTD.**

Office and Works :

**PRESTON OLD ROAD**

**BLACKPOOL**

Telephone : Blackpool 61527



## **WHITBREAD TANKARD**

### **Cool, Clear Refreshing**

# appearances + scorers

## SEASON 1972-73

Maximum League appearances possible: 26

(Goals scored in brackets)

	G	RB	LB	RH	CH	LH	OR	IR	CF	IL	OL	Total	Gls.
WOOD .. ..	6	..	..	..	..	..	..	..	..	..	..	6	
BURRIDGE ..	20	..	..	..	..	..	..	..	..	..	..	20	
HATTON .. ..	..	21	..	..	..	..	..	..	..	..	..	21	(1)
HARDCASTLE..	..	5	2	..	..	3	1	..	..	..	..	11	
BENTLEY.. ..	..	..	24	..	..	..	..	..	..	..	..	24	(1)
JAMES .. ..	..	..	..	12	1	1	..	..	1	..	..	15	
ALCOCK .. ..	..	..	..	14	1	..	..	..	..	..	..	15	(2)
SUDDABY .. ..	..	..	..	..	24	..	..	..	..	..	..	24	
BARTON .. ..	..	..	..	..	..	13	..	..	..	4	..	17	(1)
FUSCHILLO ..	..	..	..	..	..	1	..	..	..	..	..	1	
HUTCHISON ..	..	..	..	..	..	..	10	..	..	..	..	10	(3)
SUDDICK .. ..	..	..	..	..	..	..	..	26	..	..	..	26	(7)
DYSON .. ..	..	..	..	..	..	..	..	..	8	7	..	15	(5)
RAFFERTY ..	..	..	..	..	..	..	..	..	14	..	..	14	(4)
LENNARD .. ..	..	..	..	..	..	5	1	..	..	12	..	18	(2)
BURNS .. ..	..	..	..	..	..	..	11	..	..	..	12	23	(4)
AINSCOW .. ..	..	..	..	..	..	..	3	..	2	1	14	20	(10)
PARKER .. ..	..	..	..	..	..	..	..	..	1	1	..	2	
TULLY .. ..	..	..	..	..	..	2	..	..	..	..	..	2	
O'NEIL .. ..	..	..	..	..	..	1	..	..	..	..	..	1	
SIMPKIN .. ..	..	..	..	..	..	..	..	..	..	1	..	1	

*Substitutes appearing:* Ainscow (3), Simpkin (2), Hardcastle (4), Alcock (1), Parker (1), Fuschillo (3), James (3)

*League Cup appearances:* Wood (2), Burridge (5), Hardcastle (3), Hatton (5), Bentley (7), Alcock (5), Suddaby (7), Lennard (4), Hutchison (4), Suddick (7), Dyson (5), Barton (5), Burns (6), Ainscow (6), Parker (2), James (4)

*League Cup goalscorers:* Suddick (2), Hatton (1), Barton (2), Parker (1), Burns (2), Dyson (1)

*F.A. Cup appearances:* Burridge (1), Hatton (1), Bentley (1), Alcock (1), Suddaby (1), Barton (1), Burns (1), Suddick (1), Rafferty (1), Dyson (1), Ainscow (1)

*F.A. Cup goalscorers:* Suddick (1)

### SOLUTION TO SOCCER PRIZE QUIZ No. 15

**Across**—1, Harry Hibbs; 7, Barry; 9, Moer; 10, Clay; 11, Mee; 12, left; 13, Doug; 15, Peden; 16, McAnearney (Aldershot and Rotherham).

**Down**—2, (Hampden) Roar; 3, Hay; 4, Boulton (Derby); 5, Shay (Halifax); 6, Jim or Tom; 7, Benfica; 8, Reece (Cardiff); 12, Liam; 13, Dean (37); 14, Gow; 15, PNE.

**WINNER QUIZ No. 15**—Mr. A. Lewis, 73 Kirkstone Drive, Blackpool FY5 1QQ.

### TODAY'S POOL PROFILE (Cover Photograph)

**PAUL FUSCHILLO** (Full Back or Half Back). Height 5' 10". Weight 11st 8lbs. Signed from Wycombe Wanderers in July 1971, is a very strong defender. Looks a very good prospect.

# review



## The Pros. are the Best Judges of Genius

by

**Ronald Crowther**

of the Daily Mail

Genius is a word we all tend to toss around indiscriminately when talking about men of towering talent in football.

Since the George Best bust-up in the Manchester United camp there have been savagely conflicting opinions about the size and quality of his contribution to the game. But true genius is, and always has been in my Soccer vocabulary, the intuitive flair for blending one's natural skills with those of others in the common cause of a great team game.

English Soccer is littered with the wreckage of individual careers that took the wrong turning because players of outstanding ability could not or would not meet that simple requirement and because some of them had a disruptive influence on the men around them.

Without any disrespect to the fans who are only too ready to respond with warmth and affection to the first signs of budding genius, it is my belief that the final seal of approval must always come from the pros. themselves. It is when you find that a great player is idolised not only by the public but by the men who have fought long and hard campaigns alongside him that you can be sure it is the genuine, hall-marked, 24-carat quality of genius.

There have been and there still are many such men in English football. But better examples you could never possibly find than those of Stanley Matthews, Tom Finney and John Charles.

The never-to-be-forgotten "Matthews Cup Final" of 1953 was one of the finest revelations the game has ever had of the true value of a selfless, unpretentious goal-maker to Blackpool team-mates so ready and able to profit from his magic. But that was only one of countless games in which Matthews turned it on for Club teams and for England to win well-deserved world-wide acclaim.

Yet, for all his stature and all the adulation that came his way, Matthews always retained one outstanding and endearing characteristic – the humility of the supreme artist. Such was his dedication to the game that he trained harder at 30 than he did at the age of 20, and even harder still when he was past 40 and still so proud of his profession.

Tom Finney, who, like Matthews, was one of the greatest artists the game has ever known, was just as essentially a team man in every way. Great contemporaries such as Bill Shankly, Tommy Docherty and others just as well qualified to judge him as a footballer and as a man, still talk to this day of the superb example which he set. He tormented opposing defenders until the age of 38 and yet it was a sad day even for his respectful rivals when such a model footballer hung up his boots.

John Charles, the gentle giant of Leeds, Juventus and Wales, towered above team-mates in skill and class, as, indeed, he would have done in most teams of any era. But to everybody who played with him, either in this country or in Italy, the 'big feller' was the kind of character whose friendship was valued and whose team spirit was beyond question.

The reputations of such men have never been eroded by the passing years. It is still a great joy to bump into their former team-mates and opponents who still talk with genuine pride of the days when it was a privilege to appear on the same pitch as them.

# BLACKPOOL OPERA HOUSE

1973 SUMMER SEASON

COMMENCING THURSDAY, JUNE 14th

TICKETS PURCHASED BEFORE APRIL 1st—

Stalls £1.40, £1.20, £1.00; Circle £1.40, £1.20; Balcony 50p

TICKETS PURCHASED ON OR AFTER APRIL 1st

Stalls £1.40 plus 14p V.A.T., £1.20 plus 12p V.A.T., £1.00 plus 10p V.A.T.;

Circle £1.40 plus 14p V.A.T., £1.20 plus 12p V.A.T.;

Balcony 50p plus 5p V.A.T.

## THE DANNY LA RUE SPECTACULAR

JUNE 14th & 15th at 8.0 p.m.

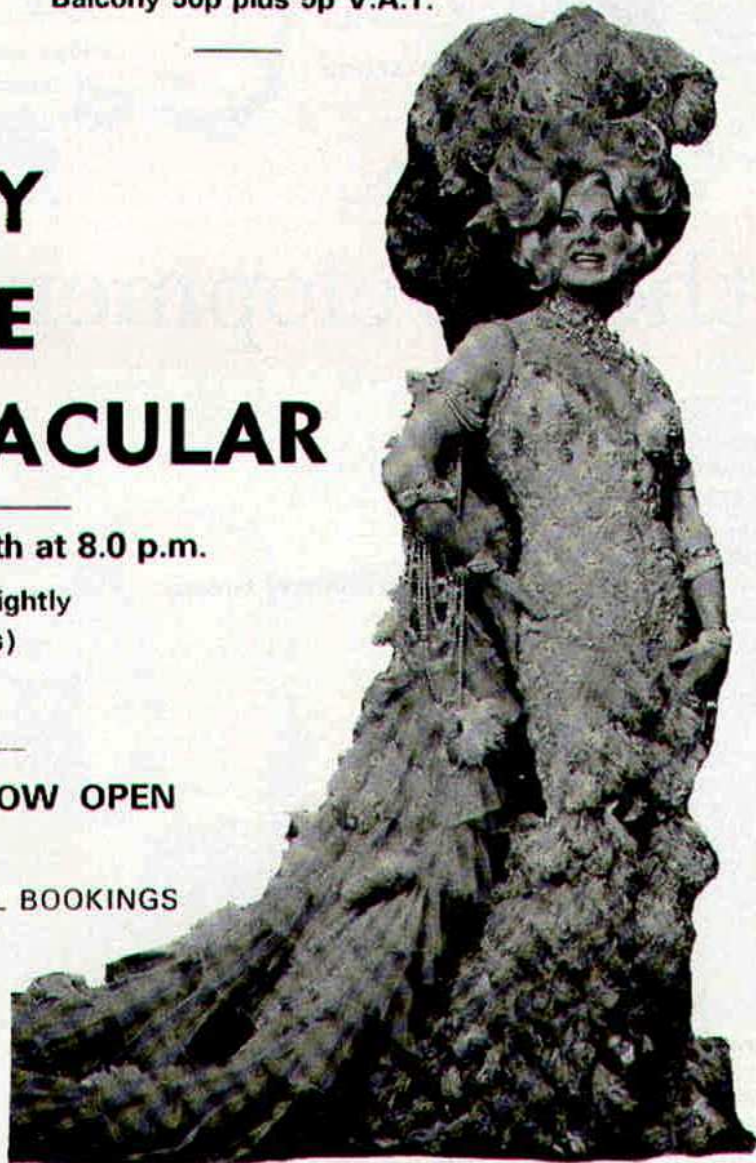
Thereafter Twice Nightly  
(excluding Sundays)

6.10 & 8.50

BOX OFFICE NOW OPEN

Or by Post from:

ADVANCE POSTAL BOOKINGS  
OPERA HOUSE  
CHURCH STREET,  
BLACKPOOL  
FY1 3PL



# go with the seashiders



Here is your RAC route  
to next week's away game at  
**ORIENT**

BLACKPOOL A583 (Preston New Road) and via Preston (south) bypass to M6 intersection 29 at Bamber Bridge (21 miles); South and via M6/M1 Midlands Link to M1 south to intersection 2, Hendon, North London junction with A1/A41 (223 miles). Follow "A1 City" signs for 2 miles to A406 North Circular Road and go left on North Circular to A104 (Woodford New Road) which you take to Whipps Cross (232 miles). Continue on A104 via Bridge Road for 1½ miles then turn left into Church Road (A1006) to LEYTON (235 miles).

# the development shop

B.F.C. Gas Lighters .....	£3.50
Tangerine/White Teddies (Large) .....	£2.12½
Tangerine/White Teddies (Small) .....	£1.30
Blackpool F.C. Canvas Holdalls .....	£1.12½
B.F.C. Cuff Links .....	£1.00
Large Tangerine/White Gonks .....	90p
B.F.C. Terylene Ties (Navy, Maroon and Green) .....	90p
University Scarves .....	95p
Conventional Scarves .....	75p
'Bob Hats' .....	50p
Tricel 'BLACKPOOL' Scarves .....	70p
B.F.C. Tangerine Towels .....	65p
"Blackpool Football" Books .....	£2.00
100 Years F.A. Cup .....	95p
1972/3 Football League Year Book .....	£1.00
F.A. Year Book for Boys .....	60p
F.A. Year Book .....	45p

## 75th ANNIVERSARY

A limited number of Mugs have been produced to commemorate the Club's Centenary.

Attractively made in Blue and Gold Lettering these mugs bear the Club Badge and list of honours.

**Price 90p** from the Club Shop.



# supporters corner

## SUPPORTERS' CORNER

It seems a long time since these notes last appeared. In fact, with the Cardiff match being postponed it was Boxing Day. However, we have not missed our football altogether as since then we ran a coach to Brighton which was about two-thirds full, not bad when everyone had finished their Christmas spending. Also our special train to Bradford which carried a full load of 270 and another coach party to Millwall last Saturday. A win, a lose and a draw. Don't forget that although the fixture lists show a blank date for Blackpool next week-end because of the Cup, the Middlesbrough v. Blackpool match has been brought forward and will be played next Friday evening. We will be running a coach to Ayresome Park. Although we do not anticipate a full coach the regulars will be there and we will fulfil our pledge that we will run coaches to all away matches even if some have to be run at a small loss. Book in the social club as early as possible if you would like to join us.

## RECORD REQUESTS

Starting today our pre-match Record Request programme will now be heard simultaneously on the ground and at the various hospitals. The programme will commence at 2.25 p.m. for half-an-hour when the match commentary panel will take over. If you have friends or relations in Victoria Hospital, Devonshire Road Hospital, Wesham Park Hospital or Princess Alexandra's Home for the Blind and you would like to send a message or request a record, please drop a line to 'Record Request, Blackpool Football Supporters' Club, Bloomfield Road, Blackpool,' to reach us by the Thursday before the match. Patients can do the same for records to be heard on the ground, or they can fill in one of the Record Request forms which are available for Radio Victoria, as we are running this service in conjunction with Radio Victoria who will be supplying the records.

## GLYN JAMES TESTIMONIAL

We are pleased to hear that the Directors have granted popular Glyn James facilities for a Testimonial Match to be played at the end of the season. We have appointed Alan Shepherd to represent the Supporters' Club on the Testimonial Committee and have already started to arrange a series of events in the Social Club, the proceeds of which will go to our contribution to the Testimonial Fund. The first of these will be on St. Patrick's Night, 17th February, in our Social Club and plenty of artistes are offering us their services. Of course, we know we have picked the wrong Saint but don't suppose the Irish will mind. Perhaps we will be able to arrange another one for St. David a fortnight later on 1st March! We will afford whatever help we can to the Testimonial Committee.

## RALPH WILSON, OUR NEW HON. SECRETARY

Our Hon. Secretary, Bob Fisher, has had to resign his post owing to a transfer to the Midlands. Bob has done a good job during the 18 months he has been our Secretary and we know he will be with us whenever he can. Ralph Wilson, who has been acting as Assistant Hon. Secretary and Registration Secretary, has agreed to take over the Secretary's job — at any rate until after our next A.G.M. and has also agreed to carry on with the Registration Secretary's duties. We have certainly been lucky these last two or three years when officials have had to retire that there has always been someone in the wings able to take over and we wish Ralph every success in his new post.

## KNOCK-OUT FOOTBALL AND SPORTS QUIZ

We have got off to a good start in our Quiz and have already had some very close games, particularly the one on the opening night when the Senior Players' 'A' team got home by an odd point. There are some very strong teams competing and when we get to the next round there must be some very interesting clashes due to take place. The first round will continue for another couple of weeks yet but on Tuesday, the 13th February, there will be a break as we are holding our Annual Dinner and Dance at the Savoy Hotel on that evening. You can get your tickets in the Social Club, price £2, which is most reasonable for a Dinner-Dance these days, but if you only want to attend the dance then you can join us from 9 p.m. until 2 a.m. for 50p only. Five hours for 50p can't be bad! There will be a bar extension until 1 a.m.

## DIARY DATES FOR SPORTS QUIZ

Tues. 30th Jan.

BLACKPOOL CRICKET CLUB	v.	BOAR'S HEAD
BLACKPOOL F.C. DIRECTORS & STAFF	v.	CENTRAL W.M.C.
B.F.C. JUNIOR PROS. 'A' (Curtis, Parker, Suddards, Walsh)	v.	STRAND F.C.

Tues. 6th Feb.

SOUTHPORT F.C. (Taylor, McPhee, Gregson, Brown)	v.	Y.M.C.A.
LANCASTER CITY F.C.	v.	PREBONDS
B.F.C. JUNIOR PROS. 'B' (McGrotty, Wood, Tulley, Corrigan)	v.	SOUTH SHORE CRICKET CLUB

Tues. 13th Feb.

SUPPORTERS' CLUB ANNUAL DINNER AND DANCE AT THE SAVOY HOTEL. Price £2. Dance only 50p.

WALTER ALKER

development association

# THE NEW THREE-N-EASY LOTTERY

1st Prize £100

2nd Prize £40

3rd Prize £20

Plus Dozens of Consolation Prizes for 'Near Misses'

Plus Weekly Draw for a Gold Watch

150 prizes every week

450 chances for you to win

No tickets to check

No claims necessary for prizes

Agents are now being enrolled for our New Scheme.

Benefits include:

- ★ Generous Expense Allowance
- ★ Bonus Prizes on winners sold
- ★ Free Admission to a number of matches
- ★ Weekly Agents' Draw

So why not fill in the coupon below or phone 44387.

.....

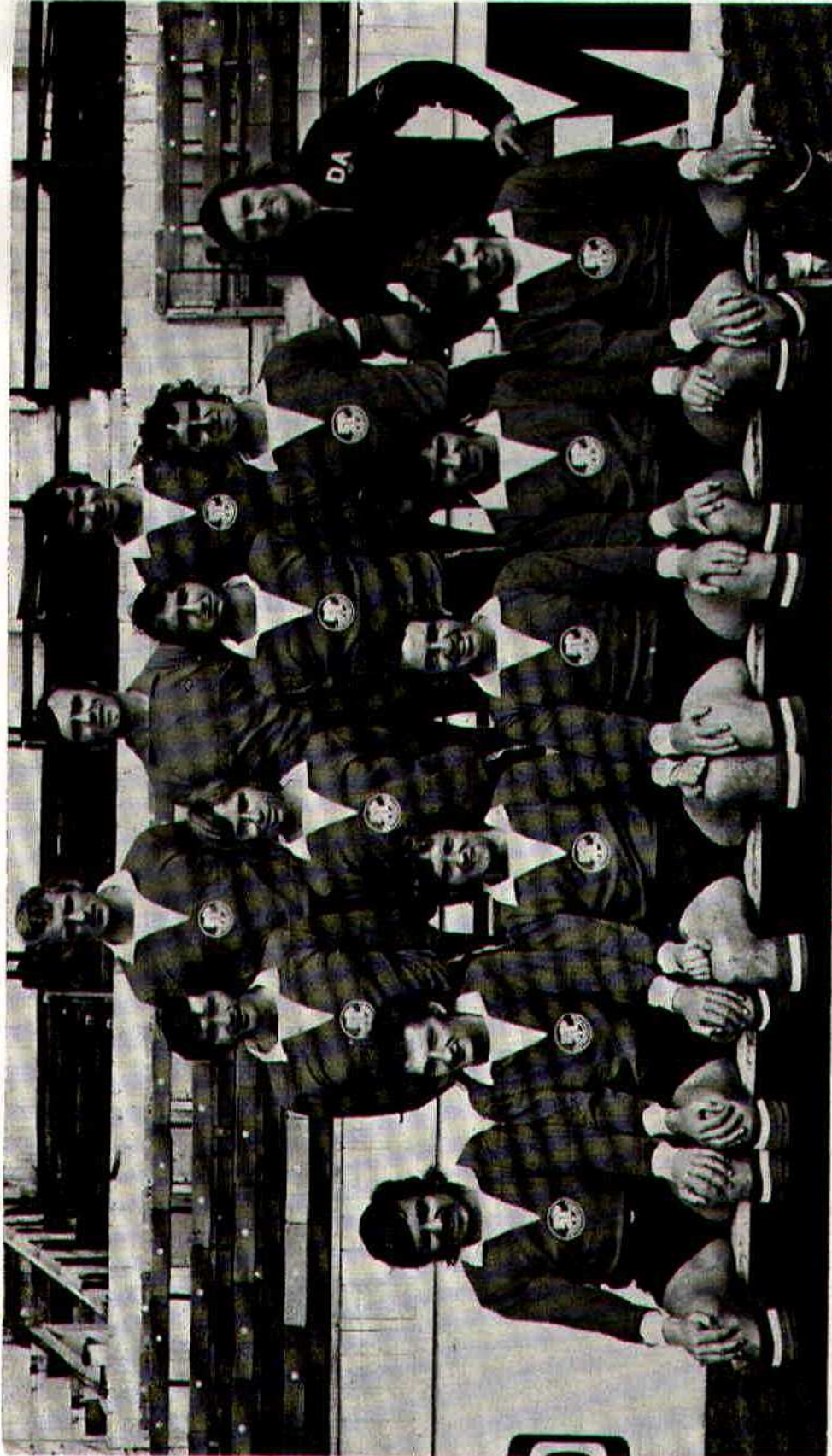
Name .....

Address .....

.....

Post off to Blackpool Development Assoc., Bloomfield Road, Blackpool

# visitors line up



**SWINDON TOWN F.C., 1972-73**

Back Row (left to right): **J. Trollope**, **P. Downsborough**, **R. Smart**.  
Middle Row (left to right): **R. Potter**, **T. Hubbard**, **R. Thomas**, **F. Burrows**, **D. Anderson**, coach (now with Notts. Forest).  
Back Row (left to right): **D. Rogers** (now with Crystal Palace), **S. Peplow**, **R. Bunkell**, **D. Mackay**, team manager (now with Notts. Forest), **R. Treacy**, **J. Butler**.

### **Manx Room Restaurant**

Quayside Fleetwood 2426

For the Meal that is special . . . with  
view of Pennines and Morecambe Bay

**Book a Table with Mr. Mitchell**

### **River Wyre Hotel**

Skippool Poulton 3791

Creek Grill nightly from seven  
Popular Snack Lunches  
Large Car Park

**Book a Table with Mr. Johns**

### **Blue Cabin Caterers Ltd.**

Poulton 3791

For all types of Functions . . . Bars . . .  
Glass Hire etc. The Fylde's outside  
catering specialists

**Book your Function with  
Miss Dewhirst**

Tea and Coffee Merchants

**Ismail**  
OF BLACKPOOL

**BIRLEY STREET  
and  
WATERLOO ROAD  
BLACKPOOL**

all sorts  
of people  
read . . .

YOU'LL FIND  
ONLY THE BEST

in

**SPORTS EQUIPMENT**

and

**SERVICE**

at the

**SPORTS  
CENTRE**

(K.J.F. LATUS LTD.)

**79 Lytham Road, Blackpool  
Telephone 46705**

**181 Lord Street, Fleetwood  
Telephone 2502**

**OFFICIAL SUPPLIERS**

to

**BLACKPOOL F.C.**



# facts+figures

## FIRST TEAM FIXTURES

		F. A.				F. A.					
1972	Aug. 12	Huddersfield Town	a	0	1	Dec. 9	Preston N. E. (F.A.2)	a	3	0	
	" 19	Brighton & H. A.	h	6	2		" 16	Sheffield Wednesday	h	1	2
	" 26	Cardiff City	a	2	1		" 23	Nottingham Forest	a	0	4
	" 28	Sunderland	h	0	0		" 26	Burnley	h	1	2
	Sept. 2	Millwall	h	2	1		" 30	Brighton & H. A.	a	2	1
	" 6	Bournemouth & B. (LC2)	a	0	0	1973	Jan. 6	Cardiff City	h	P	
	" 9	Swindon Town	a	0	0		" 13	Bradford City (F.A.3)	a	1	2
	" 11	Bournemouth & B. (LC2)	h	1	1		" 20	Millwall	a	1	1
	" 16	Orient	h	1	1		" 27	Swindon Town	h		
	" 18	Bournemouth & B. (LC2)	n	2	1		Feb. 2	Middlesbrough	a		
	" 23	Burnley	a	3	4		" 3	(F.A. Cup 4)			
	" 26	Carlisle United	a	3	2		" 10	Orient	a		
	" 30	Middlesbrough	h	0	1		" 17	Huddersfield T. (LCF)	h		
	Oct. 4	Newcastle Utd. (LC3)	a	3	0		" 24	Sheffield W. (F.A.5)	a		
	" 7	Luton Town	a	2	2		Mar. 3	Luton Town	h		
	" 14	Oxford United	h	2	1		" 10	Oxford United	a		
	" 17	Aston Villa	h	1	1		" 17	Fulham (F.A.6)	h		
	" 21	Fulham	a	0	2		" 24	Queens Park Rangers	a		
	" 28	Queens Park Rangers	h	2	0		" 31	Hull City	h		
	" 31	Birmingham C. (LC4)	h	2	0		April 7	Portsmouth (S.F.)	a		
	Nov. 4	Carlisle United	h	0	0		" 14	Preston North End	h		
	" 11	Aston Villa	a	0	0		" 21	Bristol City	a		
	" 18	Bristol City (F.A.1)	h	3	0		" 23	Nottingham Forest	h		
	" 21	Wolverhampton (LC5)	a	1	1		" 28	Sunderland	a		
	" 25	Hull City	a	2	1		May 5	(F.A. CUP FINAL)			
	" 28	Wolverhampton (LC5)	h	0	1						
	Dec. 2	Portsmouth	h	3	1						

## CENTRAL LEAGUE FIXTURES

		F. A.				F. A.					
1972	Aug. 12	Nottingham Forest	h	2	0	1973	Jan. 6	Burnley	a	P	
	" 15	Liverpool	h	2	0		" 13	Nottingham F. (F.A.3)	a	0	1
	" 19	Huddersfield Town	a	1	0		" 20	West Bromwich Albion	h	3	1
	" 21	Aston Villa	h	2	1		" 27	Newcastle United	a		
	" 26	Burnley	h	3	0		" 31	Wolverhampton W.	a		
	" 30	Blackburn Rovers	a	2	0		Feb. 3	(F.A. Cup 4)			
	Sept. 2	West Bromwich Albion	a	1	1		" 10	Stoke City	h		
	" 9	Newcastle United	h	2	1		" 17	Sheffield Wednesday	a		
	" 16	Stoke City	a	0	5		" 24	Bolton W. (F.A.5)	h		
	" 23	Sheffield Wednesday	h	0	2		Mar. 3	Leeds United	a		
	" 30	Bolton Wanderers	a	2	2		" 10	Sheffield United	h		
	Oct. 7	Leeds United	h	2	0		" 17	Bury (F.A.6)	a		
	" 14	Sheffield United	a	1	2		" 24	Manchester City	h		
	" 21	Bury	h	0	1		" 27	Coventry City	a		
	" 28	Manchester City	a	1	3		April 7	Everton (S.F.)	h		
	Nov. 4	Aston Villa	a	0	2		" 14	Preston North End	a		
	" 11	Wolverhampton W.	h	0	1		" 21	Derby County	h		
	" 18	Derby County (F.A.1)	a	2	0		" 24	Manchester United	h		
	" 25	Coventry City	h	0	2		" 28	Blackburn Rovers	h		
	Dec. 2	Everton	a	3	2		" 30	Liverpool	a		
	" 8	Preston N. E. (F.A.2)	h	0	0		May 5	(F.A. CUP FINAL)			
	" 16	Manchester United	a	P							
	" 30	Huddersfield Town	h	5	1						

# today's referee

LES HAYES (Doncaster) is in his first season as a full Football League referee after a season on the supplementary list. A foundry foreman he is married with two daughters and started refereeing in the Doncaster Bentley League in 1956. He was promoted to the Yorkshire League in 1959 and to the Northern Premier League when it started.

Last season, he took charge of the Non-League Champions' Cup play-off between Stafford Rangers and Chelmsford.

He is interested in motoring, swimming and cricket.

**The Club wishes to thank the following Donators  
of the Match Balls for the Season 1972/73**

Ashton Candy Co. . . . .	Back Cunliffe Road, Blackpool.
Cambridge Press Ltd. . . . .	Whalley Road, Clayton-le-Moors, Accrington.
Red Cab Taxis . . . . .	6 Counce Street, Blackpool.
Blackpool Plumbing & Heating Ltd. . . . .	100 Charles Street, Blackpool.
Messrs. Bennisons Ltd. . . . .	Radio & TV., 77 Waterloo Road, Blackpool.
Mr. Baguley . . . . .	"Baguley's Gardens," Stockydale Rd., Blackpool
W. Helmn & Son . . . . .	Plasterers, Cowley Road, Blackpool.
H. Duckworth, Esq. . . . .	63 Waterloo Road, Blackpool.
Woodhead's Garage . . . . .	Squires Gate Lane, Blackpool.
Messrs. Greenwood & Driscoll . . . . .	"Tudor Bingo," Central Station, Blackpool.
Norman Parker's Carpet Services . . . . .	295/297 Whitegate Drive, Blackpool.
World Wide Travel . . . . .	48 Red Bank Road, Blackpool.
Wm. Eaves & Co. . . . .	Builders, All Hallows Road, Blackpool.
Geo. Forbes & Co. . . . .	Builders' Merchants, Henry Street, Blackpool.
Entwistle's Estates . . . . .	2 Dickson Road, Blackpool.
Supporter's Coach . . . . .	Blackpool F.C. Supporters Club.
Blue Cabin Caterers . . . . .	River Wyre Hotel.
Mr. Erskine . . . . .	Silver Fish Supply, Harrowside, Blackpool
Sports Printers (Blackpool) . . . . .	Chiswick Grove, Blackpool.
E. G. Round, Esq. . . . .	Auctioneer, 4 Bloomfield Road, Blackpool.
Lawrence Home Im- provement Centre . . . . .	Builders' & Plumbers' Merchants.
(J. H. Lawrence & Co.) . . . . .	Buchanan Street, Blackpool.
Agnew Supply Co. . . . .	Watson Road, Blackpool

**CURRENT LEAGUE TABLES**

SECOND DIVISION								CENTRAL LEAGUE							
	P.	W.	D.	L.	Goals			P.	W.	D.	L.	Goals			
					F.	A.	Pts					F.	A.	Pts	
Burnley . . . . .	25	13	11	1	43	23	37	Coventry City . . . . .	25	16	5	4	49	24	37
Queens Park Rangers . . . . .	26	12	10	4	46	31	34	Derby County . . . . .	27	16	5	6	56	33	37
Aston Villa . . . . .	26	11	9	6	30	27	31	Sheffield Wednesday . . . . .	28	14	7	7	53	29	35
Fulham . . . . .	26	10	10	6	39	30	30	Liverpool . . . . .	24	14	5	5	56	30	33
<b>Blackpool</b> . . . . .	<b>26</b>	<b>11</b>	<b>8</b>	<b>7</b>	<b>40</b>	<b>31</b>	<b>30</b>	Stoke City . . . . .	27	14	5	8	55	38	33
Luton Town . . . . .	26	11	8	7	34	29	30	West Bromwich Albion . . . . .	26	13	6	7	44	34	32
Oxford United . . . . .	27	12	5	10	32	26	29	Everton . . . . .	23	12	5	6	34	19	29
Sheffield Wednesday . . . . .	27	10	8	9	44	39	28	Aston Villa . . . . .	26	12	5	9	34	32	29
Middlesbrough . . . . .	27	9	9	9	23	23	27	Sheffield United . . . . .	24	11	5	8	35	27	27
Preston North End . . . . .	27	10	7	10	26	33	27	Wolverhampton Wanderers . . . . .	24	11	4	9	34	28	26
Hull City . . . . .	26	8	10	8	36	31	26	Nottingham Forest . . . . .	24	10	6	8	37	34	26
Nottingham Forest . . . . .	26	9	8	9	31	33	26	Manchester United . . . . .	24	10	6	8	30	28	26
Bristol City . . . . .	26	9	8	9	32	33	26	<b>Blackpool</b> . . . . .	<b>23</b>	<b>11</b>	<b>3</b>	<b>9</b>	<b>31</b>	<b>27</b>	<b>25</b>
Millwall . . . . .	27	9	7	11	35	31	25	Manchester City . . . . .	26	8	9	9	37	45	25
Carlisle United . . . . .	25	9	6	10	39	32	24	<b>Newcastle United</b> . . . . .	<b>21</b>	<b>10</b>	<b>1</b>	<b>10</b>	<b>38</b>	<b>31</b>	<b>21</b>
<b>Swindon Town</b> . . . . .	<b>26</b>	<b>6</b>	<b>11</b>	<b>9</b>	<b>33</b>	<b>39</b>	<b>23</b>	Leeds United . . . . .	26	7	5	14	25	39	19
Portsmouth . . . . .	26	7	8	11	27	33	22	Huddersfield Town . . . . .	24	6	6	12	30	48	18
Huddersfield Town . . . . .	25	5	11	9	22	30	21	Bury . . . . .	24	7	3	14	33	59	17
Sunderland . . . . .	23	6	9	8	31	33	21	Burnley . . . . .	24	5	5	14	30	42	15
Orient . . . . .	26	5	10	11	22	32	20	Bolton Wanderers . . . . .	25	4	5	16	25	60	13
Cardiff City . . . . .	24	8	4	12	29	37	20	Preston North End . . . . .	24	3	6	15	23	49	12
Brighton & H.A. . . . .	27	2	9	16	27	60	13	Blackburn Rovers . . . . .	25	3	3	19	22	55	9

(Up to and including matches played 20th January)

(Up to and including matches played 19th January)

**NEXT HOME MATCH**

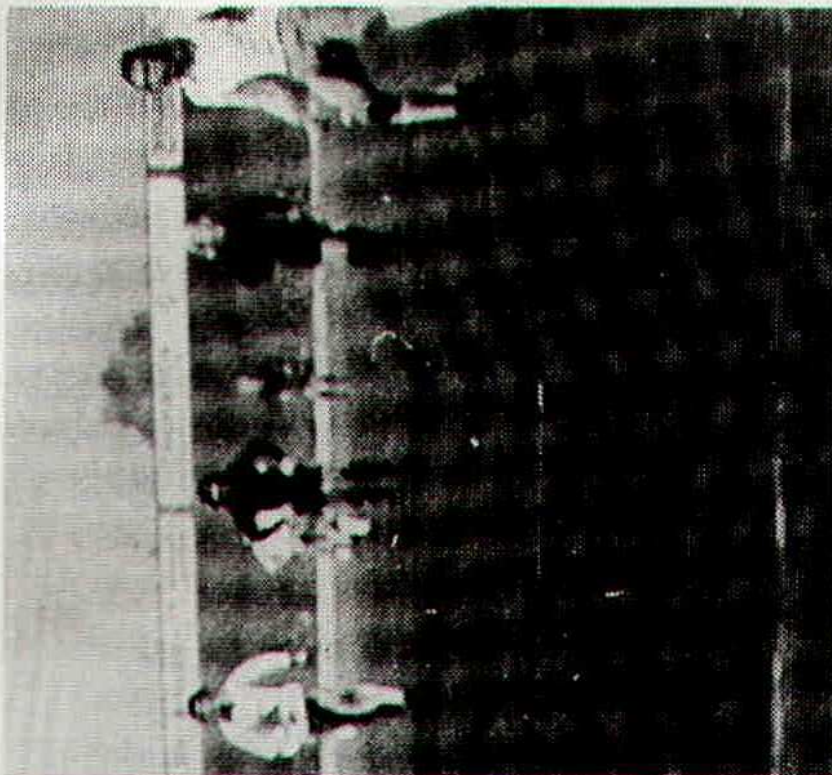
**SATURDAY, 10th FEBRUARY, 1973**

**CENTRAL LEAGUE**

**STOKE CITY**

**KICK-OFF 3.00 p.m.**

# BLOOMFIELD action



The penalty incident and the penalty scorer in the Third Round Cup-tie against Bradford City. Mickey Burns (left) is brought down in the area and Alan Suddick (above) scores from the resultant spot kick to give Blackpool their only goal in a disappointing display.



# line up

## **BLACKPOOL**

(Tangerine shirts)

1. **John Burridge**
2. **Peter Hardcastle**
3. **Bill Bentley**
4. **Glyn James**
5. **Terry Alcock**
6. **Chris Simpkin**
7. **Micky Burns**
8. **Alan Suddick**
9. **Billy Rafferty**
10. **Tommy O'Neil**
11. **Alan Ainscow**

Sub.:

## **SWINDON TOWN**

(Blue Shirts)

1. **Jim Allan**
2. **Rod Thomas**
3. **John Trollope**
4. **Ray Bunkell**
5. **Frank Burrows**
6. **Ron Potter**
7. **David Moss**
8. **Joe Butler**
9. **Ray Treacy**
10. **Peter Noble**
11. **Tom Jenkins**

Sub.:

TODAY'S MATCH BALL  
donated by  
BLUE CABIN CATERERS  
River Wyre Hotel

# officials

Referee:

**L. HAYES**

(Doncaster)

Linesmen:

**R. D. BAYLEY**

(Red flag)

**A. A. BOOTH**

(Yellow flag)

## **1** time **2** scores

<b>A</b>	Aston Villa Cardiff City
<b>B</b>	Bristol City Orient
<b>C</b>	Carlisle United Middlesbrough
<b>D</b>	Fulham Brighton & H.A.
<b>E</b>	Hull City Preston North End
<b>F</b>	Luton Town Nottingham Forest
<b>G</b>	Oxford United Huddersfield Town
<b>H</b>	Portsmouth Sheffield Wednesday
<b>I</b>	Queens Park Rangers Burnley
<b>J</b>	Sunderland Millwall
<b>K</b>	Wolverhampton W. Liverpool
<b>L</b>	Arsenal Newcastle United
<b>M</b>	Coventry City Manchester United
<b>N</b>	Crystal Palace Tottenham Hotspur
<b>O</b>	Leeds United Stoke City
<b>P</b>	Newcastle Utd. Res. Blackpool Res.